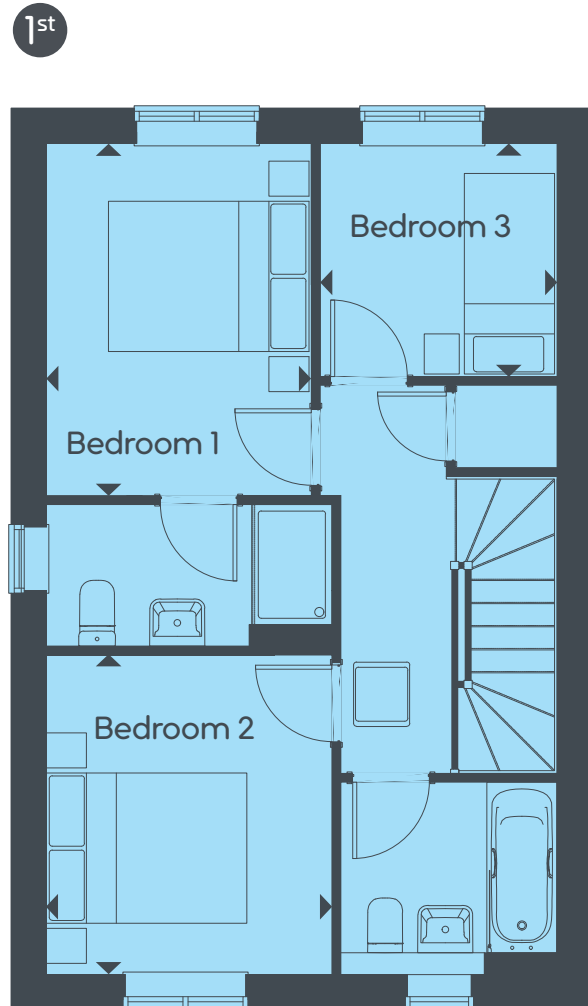
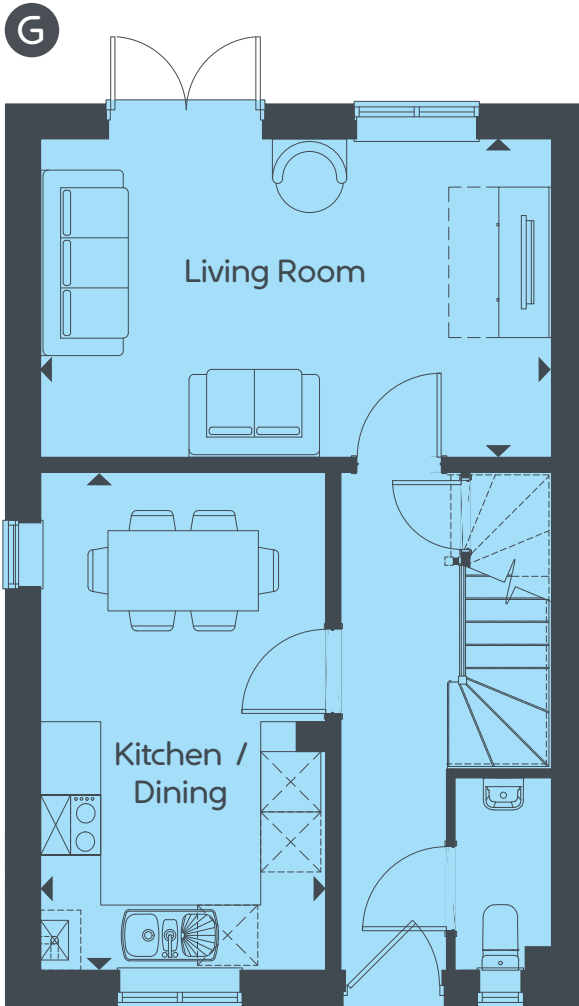


# Keyford Meadows

3 Bedrooms



[www.curo-sales.co.uk](http://www.curo-sales.co.uk)



## The Westonbirt 2

3 Bedrooms | Total area: 84 M<sup>2</sup> 909 FT<sup>2</sup>

### Ground Floor

Living Room 5.10 x 3.17m 16' 9" x 10' 5"  
Kitchen / Dining 4.97 x 2.85m 16' 4" x 9' 4"

### 1st Floor

Bedroom 1 3.51 x 2.65m 11' 6" x 8' 8"  
Bedroom 2 3.19 x 2.85m 10' 6" x 9' 4"  
Bedroom 3 2.36 x 2.33m 7' 9" x 7' 8"



Maximum dimensions, some plots are handed compared to floor plans shown and window positions vary. Please speak to our sales executive for details. The floor plans depict a typical layout for this house type and room layouts are indicative only. For exact specification details of external and internal finishes, dimensions and floor plan differences please consult your sales executive. All dimensions are + or - 50mm and floor plans are not shown to scale. This image is from an imaginary viewpoint within an open space area. The purpose is to give a feel for the development and not an accurate description of each property. External materials, finishes and landscaping and the positions of garages may vary throughout the development. October 2025.