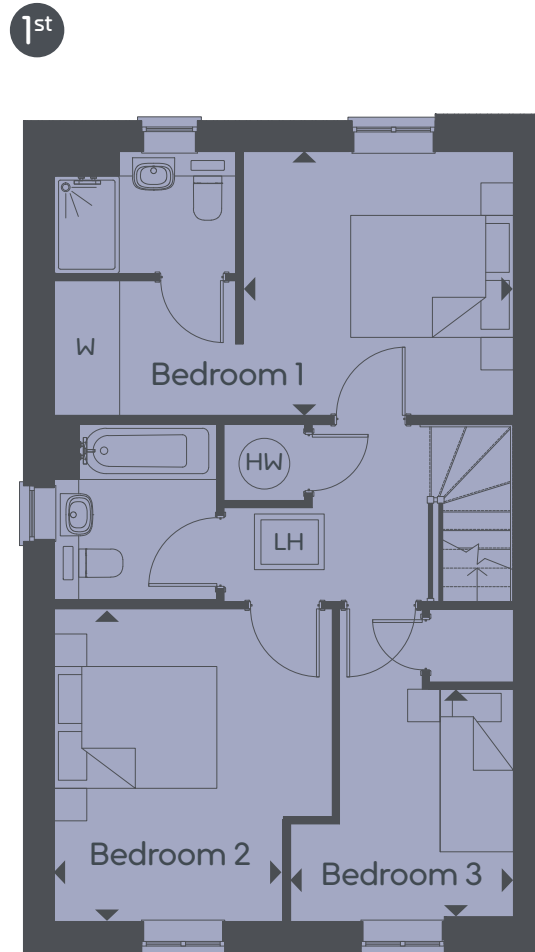
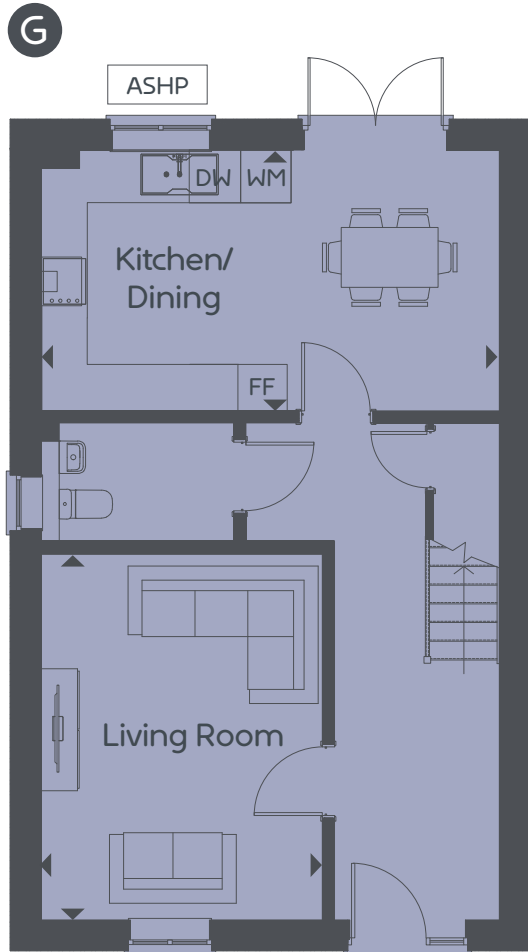


Withies Green

3 Bedrooms



www.curo-sales.co.uk



ASHP Air Source Heat Pump HW Hot Water Cylinder FF Fridge freezer WM Space for washing machine DW Removable unit for dishwasher
 W Indicative wardrobe position LH Loft hatch

The Norton

3 Bedrooms | Total area: 107 M² 1151 FT²

Ground Floor

Kitchen/Dining 5.64 x 3.21m 18' 6" x 10' 6" Living Room 4.51 x 3.46m 14' 9" x 11' 4"

1st Floor

Bedroom 1 3.33 x 3.25m 10' 11" x 10' 8" Bedroom 2 3.85 x 2.82m 12' 7" x 9' 3" Bedroom 3 2.86 x 2.74m 9' 5" x 9' 0"



Maximum dimensions and some plots are handed compared to floor plans shown. Please speak to our sales executive for details. The floor plans depict a typical layout for this house type and room layouts are indicative only. For exact specification details of external and internal finishes, dimensions and floor plan differences please consult your sales executive. All dimensions are + or - 50mm and floor plans are not shown to scale. This image is from an imaginary viewpoint within an open space area. The purpose is to give a feel for the development and not an accurate description of each property. External materials, finishes and landscaping and the positions of garages may vary throughout the development. March 2026.