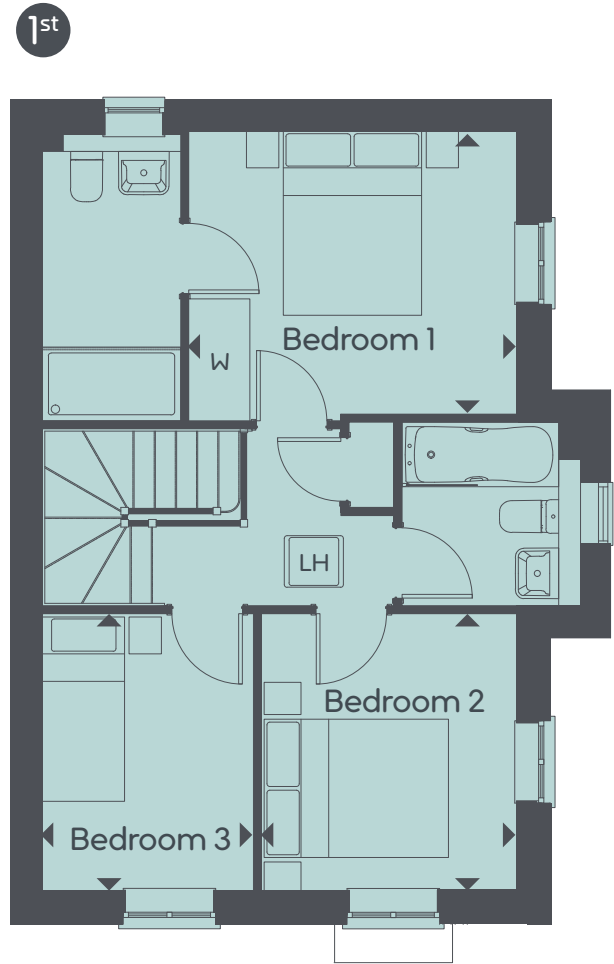
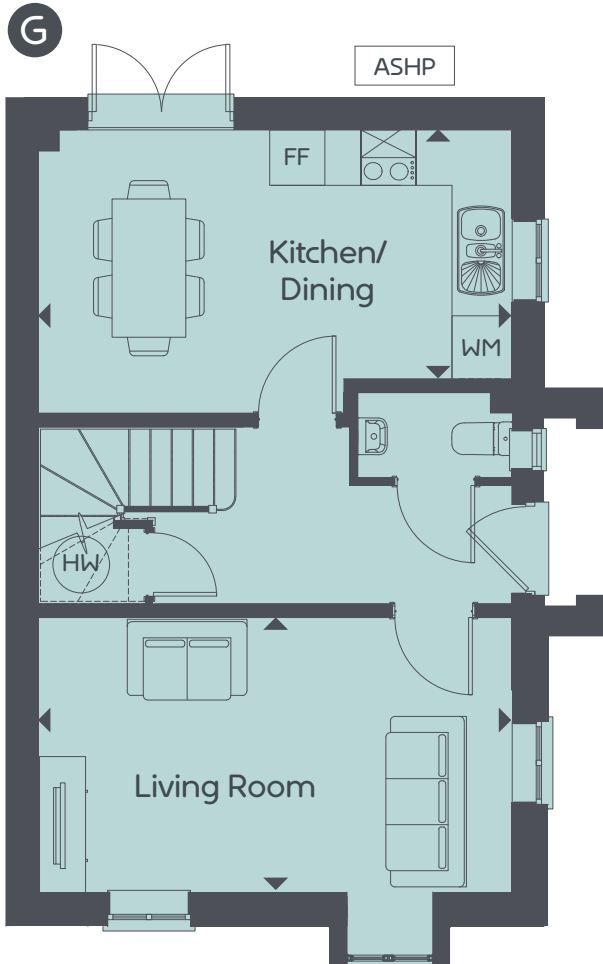


Withies Green

3 Bedrooms



www.curo-sales.co.uk



ASHP Air Source Heat Pump HW Hot Water Cylinder FF Fridge freezer WM Space for washing machine W Indicative wardrobe position LH Loft hatch

The Avebury

3 Bedrooms | Total area: 89 M² 956 FT²

Ground Floor

Kitchen/Dining Living Room
5.19 x 2.70m 17' 0" x 8' 10" 5.19 x 3.05m 17' 0" x 10' 0"

1st Floor

Bedroom 1 Bedroom 2 Bedroom 3
3.61 x 3.04m 11' 10" x 10' 0" 3.12 x 2.82m 10' 3" x 9' 3" 3.12 x 2.29m 10' 3" x 7' 6"



Maximum dimensions and some plots are handed compared to floor plans shown. Please speak to our sales executive for details. The floor plans depict a typical layout for this house type and room layouts are indicative only. For exact specification details of external and internal finishes, dimensions and floor plan differences please consult your sales executive. All dimensions are + or - 50mm and floor plans are not shown to scale. This image is from an imaginary viewpoint within an open space area. The purpose is to give a feel for the development and not an accurate description of each property. External materials, finishes and landscaping and the positions of garages may vary throughout the development. March 2026.