



Eaton Park

The Avebury 1, 2 & 3

3 Bedrooms

Total area: 86 M² 931 FT²

Parking: 2 spaces



www.curo-sales.co.uk

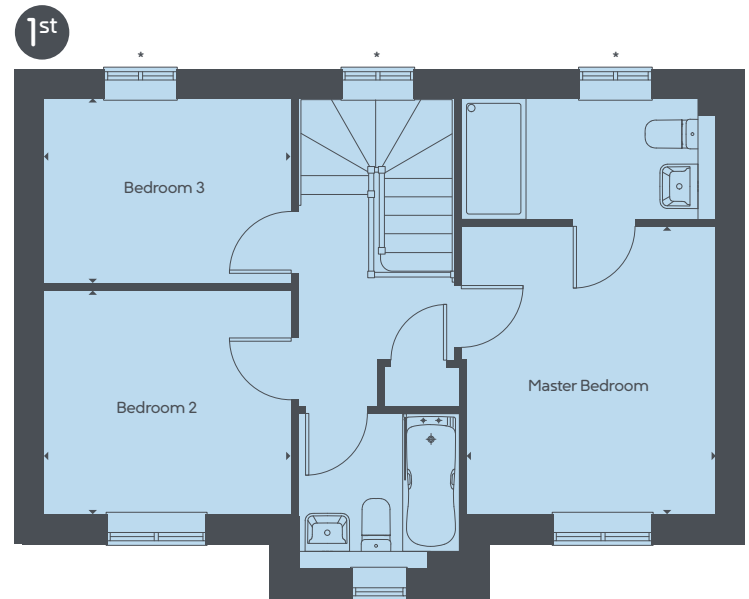
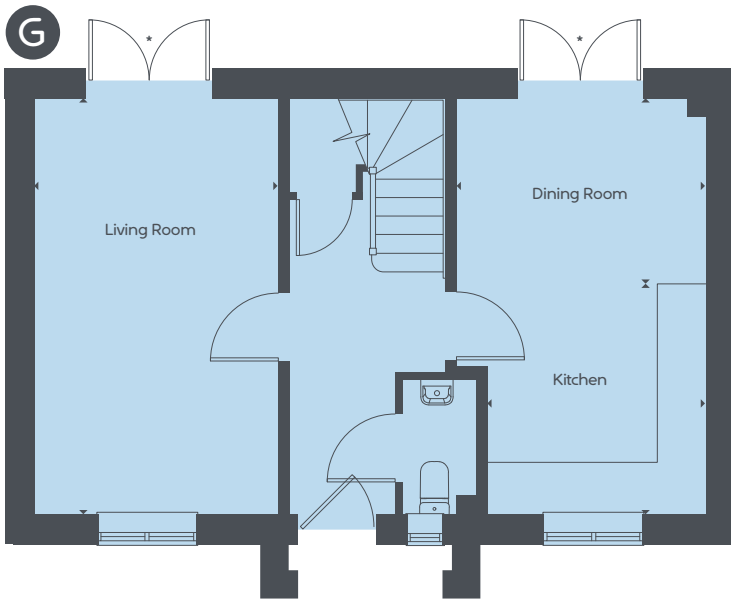
This image is from an imaginary viewpoint within an open space area. The purpose is to give a feel for the development and not an accurate description of each property. External materials, finishes and landscaping and the positions of garages may vary throughout the development.

Eaton Park

3
Bedrooms



www.curo-sales.co.uk



The Avebury 1, 2 & 3 3 Bedrooms

Total area: 86 M² 931 FT²

Parking: 2 spaces

G Floor

Living Room	5.14 x 3.00m	16' 10" x 9' 10"
Dining Room	3.07 x 2.29m	10' 1" x 7' 6"
Kitchen	2.84 x 2.70m	9' 4" x 8' 10"

1st Floor

Master Bedroom	3.55 x 3.12m	11' 7" x 10' 2"
Bedroom 2	3.05 x 2.76m	10' 0" x 9' 0"
Bedroom 3	3.05 x 2.28m	10' 0" x 7' 6"

Maximum dimensions and some plots are handed compared to floor plans shown. Please speak to our sales executive for details. The floor plans depict a typical layout for this house type and room layouts are indicative only. Timber frame property, dimensions will vary. For exact specification details of external and internal finishes, dimensions and floor plan differences please consult your sales executive. All dimensions are + or - 50mm and floor plans are not shown to scale. *Windows and doors vary between plots. November 2020.