



## Shared Ownership sales details



8 Primrose Court, Frome, BA11 1FN



## 8 Primrose Court

Curo are pleased to be offering a desirable two-bedroom, first floor apartment located on the outskirts of Frome. This home is just a 15-minute walk from the picturesque town centre and its wealth of independent shops, thriving café culture and arts scene, not to mention one of the longest-running outdoor weekly markets in the country. You'll also be less than a 10-minute walk from the local train station, which provides easy access to the cities of Bristol and Bath.

### Get in touch

0345 140 50 50  
curo-sales.co.uk

Facebook @curosales Twitter @curo\_sales

#SharedOwnership

### Property features:

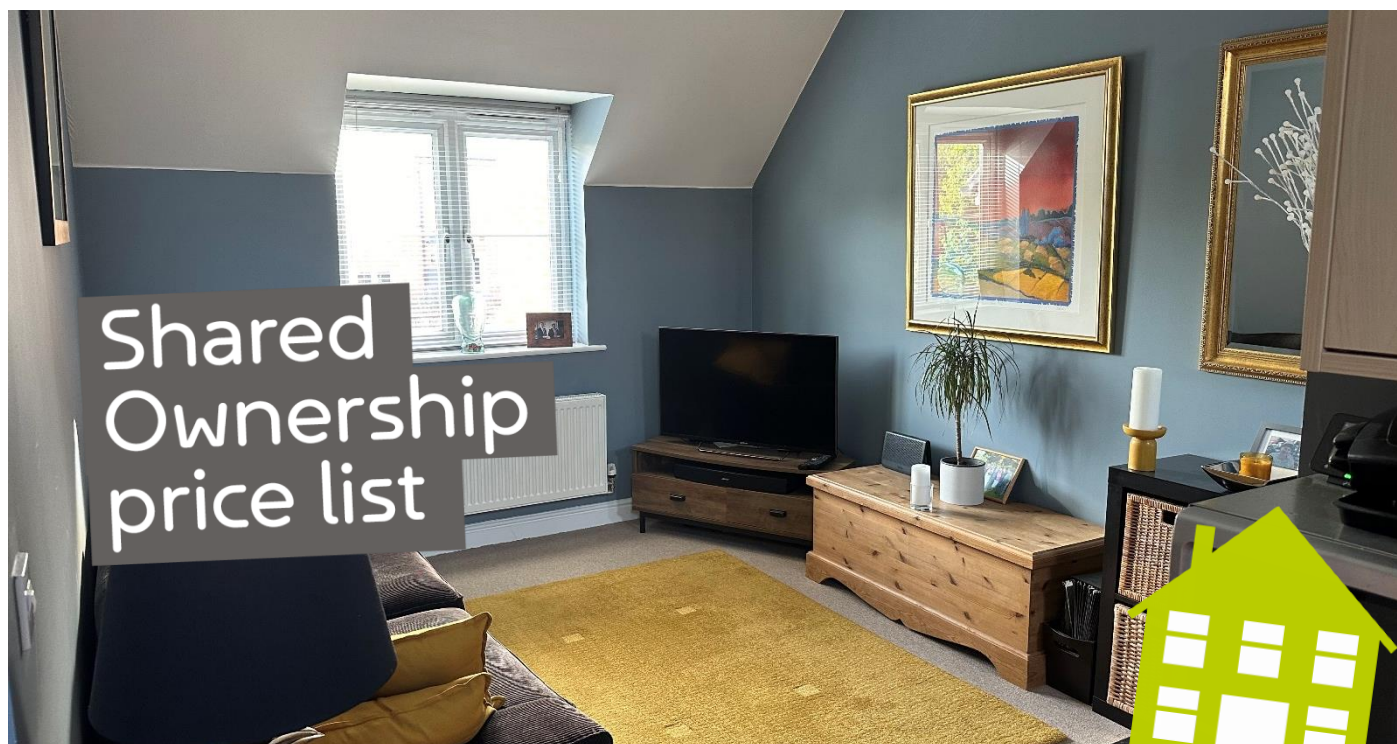
- Integrated cooker and hob
- Flooring included
- Large hallway
- Shower over bath
- Outside garden space
- 1 allocated parking space

### Eligibility requirements:

#### Households need to:

- Create a login and apply for this property on our website:  
[www.curo-sales.co.uk/shared-ownership/](http://www.curo-sales.co.uk/shared-ownership/)
- Must have a local connection to Somerset





# Shared Ownership price list

 8 Primrose Court, Frome, BA11 1FN

## 8 Primrose Court

Please contact Curo on 0345 140 50 50  
for more information.

- Create a login and apply for this property on our website:  
[www.curo-sales.co.uk/shared-ownership/](http://www.curo-sales.co.uk/shared-ownership/)

- Must have a local connection to Somerset

These particulars do not constitute any part of an offer or contract and any intending purchaser must make their own enquiries as to the accuracy of any representations contained herein. Curo do not guarantee the accuracy of any representations contained herein and reserves the right to amend or alter the particulars of the properties or this brochure at any time before contracts for sales with any purchaser are concluded.

Your home will be at risk if you do not keep up repayments on any loan secured on the property.

No of beds	<b>2</b>
100% sales value	<b>£185,000</b>
Minimum share price	<b>50%</b>
Purchase price of share	<b>£92,500</b>
Rent per month	<b>£244.05</b>
Service charge per month	<b>£179.56</b>

### Get in touch

0345 140 50 50  
curo-sales.co.uk

 @curosales  @curo\_sales

#SharedOwnership

  
worth it!

