

HARBOUR CRESCENT

1, 2 & 3 BED APARTMENTS

FLOOR 3



1 BEDROOM APARTMENT

PLOT E1

Kitchen/Dining/Living	6.98 x 4.04m	22' 11" x 13' 3"
Bedroom 1	4.33 x 3.43m	14' 2" x 11' 3"

2 BEDROOM APARTMENTS

PLOT E2

Kitchen/Dining/Living	5.49 x 5.18m	18' 0" x 17' 0"
Bedroom 1	5.18 x 3.01m	17' 0" x 9' 10"
Bedroom 2	3.51 x 2.29m	11' 6" x 7' 6"

PLOT E3

Kitchen/Dining/Living	8.44 x 3.59m	27' 8" x 11' 9"
Bedroom 1	4.90 x 2.84m	16' 1" x 9' 4"
Bedroom 2	3.93 x 2.09m	12' 11" x 6' 10"

PLOT E4

Kitchen/Dining/Living	6.28 x 5.56m	20' 7" x 18' 3"
Bedroom 1	4.90 x 3.29m	16' 1" x 10' 10"
Bedroom 2	3.58 x 3.31m	11' 9" x 10' 10"

PLOT E5

Kitchen/Dining/Living	5.99 x 3.95m	19' 8" x 13' 0"
Bedroom 1	4.21 x 3.08m	13' 10" x 10' 1"
Bedroom 2	3.58 x 2.28m	11' 9" x 7' 6"

PLOT E6

Kitchen/Dining/Living	8.44 x 3.48m	27' 8" x 11' 5"
Bedroom 1	4.49 x 2.80m	14' 9" x 9' 2"
Bedroom 2	3.93 x 2.98m	12' 10" x 9' 9"

PLOT E7

Kitchen/Dining/Living	5.54 x 5.18m	18' 2" x 17' 0"
Bedroom 1	5.18 x 2.96m	17' 0" x 9' 9"
Bedroom 2	3.45 x 2.29m	11' 4" x 7' 6"

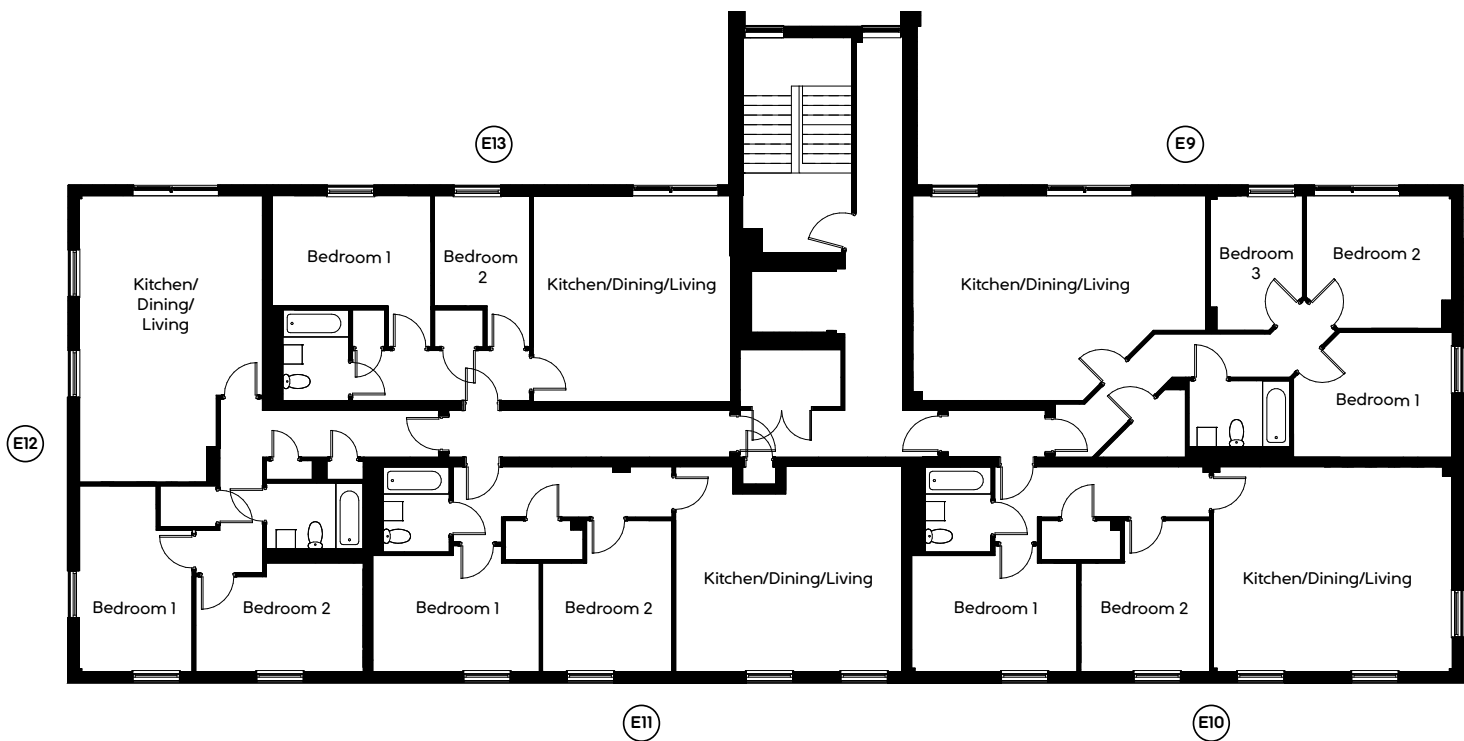
PLOT E8

Kitchen/Dining/Living	6.98 x 4.80m	22' 11" x 15' 9"
Bedroom 1	4.90 x 3.32m	16' 1" x 10' 11"
Bedroom 2	3.58 x 3.28m	11' 9" x 10' 9"

HARBOUR CRESCENT

1, 2 & 3 BED APARTMENTS

FLOOR 4



3 BEDROOM APARTMENTS

PLOT E9

Kitchen/Dining/Living	7.62 x 5.35m	25' 0" x 17' 7"
Bedroom 1	4.15 x 3.27m	13' 7" x 10' 9"
Bedroom 2	4.15 x 3.47m	13' 7" x 11' 5"
Bedroom 3	3.52 x 2.43m	11' 7" x 8' 0"

2 BEDROOM APARTMENTS

PLOT E10

Kitchen/Dining/Living	6.22 x 5.10m	20' 5" x 16' 9"
Bedroom 1	4.31 x 3.04m	14' 2" x 10' 0"
Bedroom 2	3.94 x 3.36m	12' 11" x 11' 0"

PLOT E11

Kitchen/Dining/Living	5.89 x 5.35m	19' 4" x 17' 7"
Bedroom 1	4.34 x 2.84m	14' 3" x 9' 4"
Bedroom 2	4.18 x 3.36m	13' 9" x 11' 0"

PLOT E12

Kitchen/Dining/Living	7.60 x 3.65m	24' 11" x 12' 0"
Bedroom 1	4.84 x 2.97m	15' 11" x 9' 9"
Bedroom 2	4.37 x 2.85m	14' 4" x 9' 4"

PLOT E13

Kitchen/Dining/Living	5.35 x 5.13m	17' 7" x 16' 10"
Bedroom 1	4.14 x 2.90m	13' 7" x 9' 6"
Bedroom 2	3.95 x 2.50m	12' 11" x 8' 2"