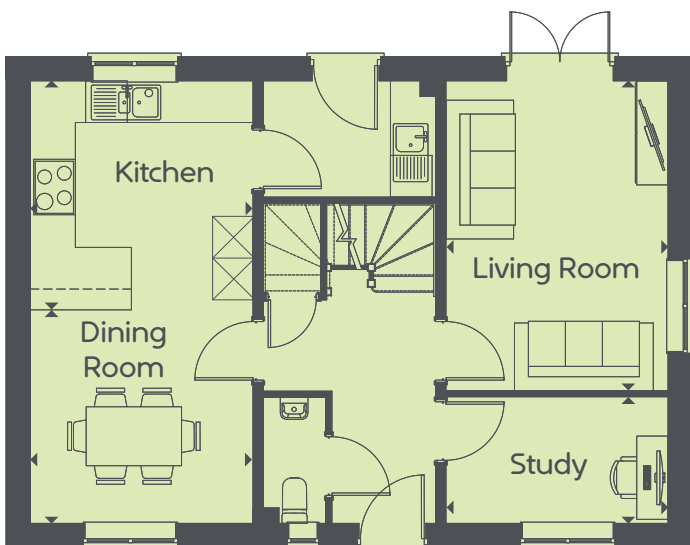


Keyford Meadows

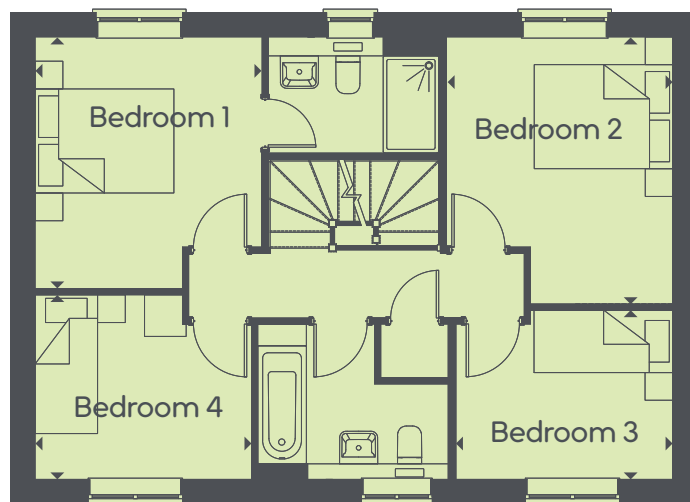
4 Bedrooms

www.curo-sales.co.uk

G



1st



The Ashton v1

4 Bedrooms | Total area: 117 M² 1262 FT²

Ground Floor

Kitchen 3.30 x 3.21m 10' 10" x 10' 6"	Dining Room 3.21 x 3.08m 10' 6" x 10' 1"	Living Room 4.47 x 3.20m 14' 8" x 10' 6"
Study 3.20 x 1.83m 10' 6" x 6' 0"		

1st Floor

Bedroom 1 3.63 x 3.27m 11' 11" x 10' 9"	Bedroom 2 3.85 x 3.26m 12' 8" x 10' 8"	Bedroom 3 3.15 x 2.44m 10' 4" x 8' 0"
Bedroom 4 3.27 x 2.66m 10' 9" x 8' 9"		



Maximum dimensions and some plots are handed compared to floor plans shown. Please speak to our sales executive for details. The floor plans depict a typical layout for this house type and room layouts are indicative only. For exact specification details of external and internal finishes, dimensions and floor plan differences, please consult your sales executive. All dimensions are + or - 50mm and floor plans are not shown to scale. This image is from an imaginary viewpoint within an open space area. The purpose is to give a feel for the development and not an accurate description of each property. External materials, finishes and landscaping and the positions of garages may vary throughout the development. October 2025.