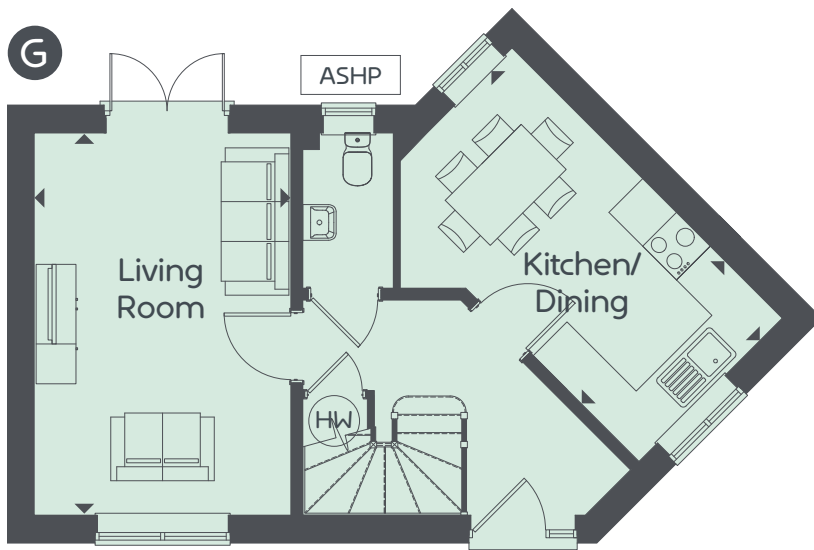


# Keyford Meadows

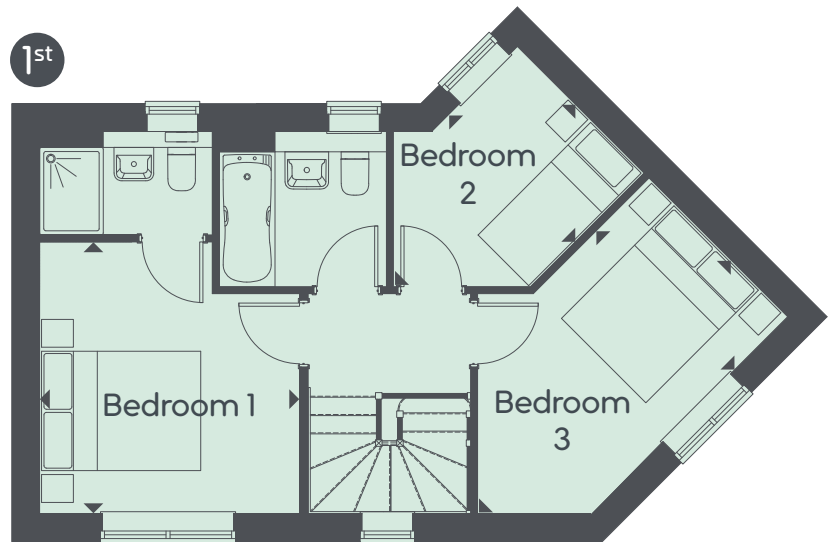
3 Bedrooms



www.curo-sales.co.uk



ASHP Air Source Heat Pump HW Hot Water Cylinder



## The Severn

3 Bedrooms | Total area: 81 M<sup>2</sup> 873 FT<sup>2</sup>

### Ground Floor

Living Room 4.80 x 3.23m 15' 9" x 10' 7"      Kitchen/Dining 4.80 x 2.55m 15' 9" x 8' 4"

### 1st Floor

Bedroom 1 3.42 x 3.27m 11' 2" x 10' 9"      Bedroom 2 4.51 x 2.47m 14' 9" x 8' 1"      Bedroom 3 3.24 x 2.25m 10' 7" x 7' 5"



Maximum dimensions and some plots are handed compared to floor plans shown. Please speak to our sales executive for details. The floor plans depict a typical layout for this house type and room layouts are indicative only. For exact specification details of external and internal finishes, dimensions and floor plan differences please consult your sales executive. All dimensions are + or - 50mm and floor plans are not shown to scale. This image is from an imaginary viewpoint within an open space area. The purpose is to give a feel for the development and not an accurate description of each property. External materials, finishes and landscaping and the positions of garages may vary throughout the development. May 2026.