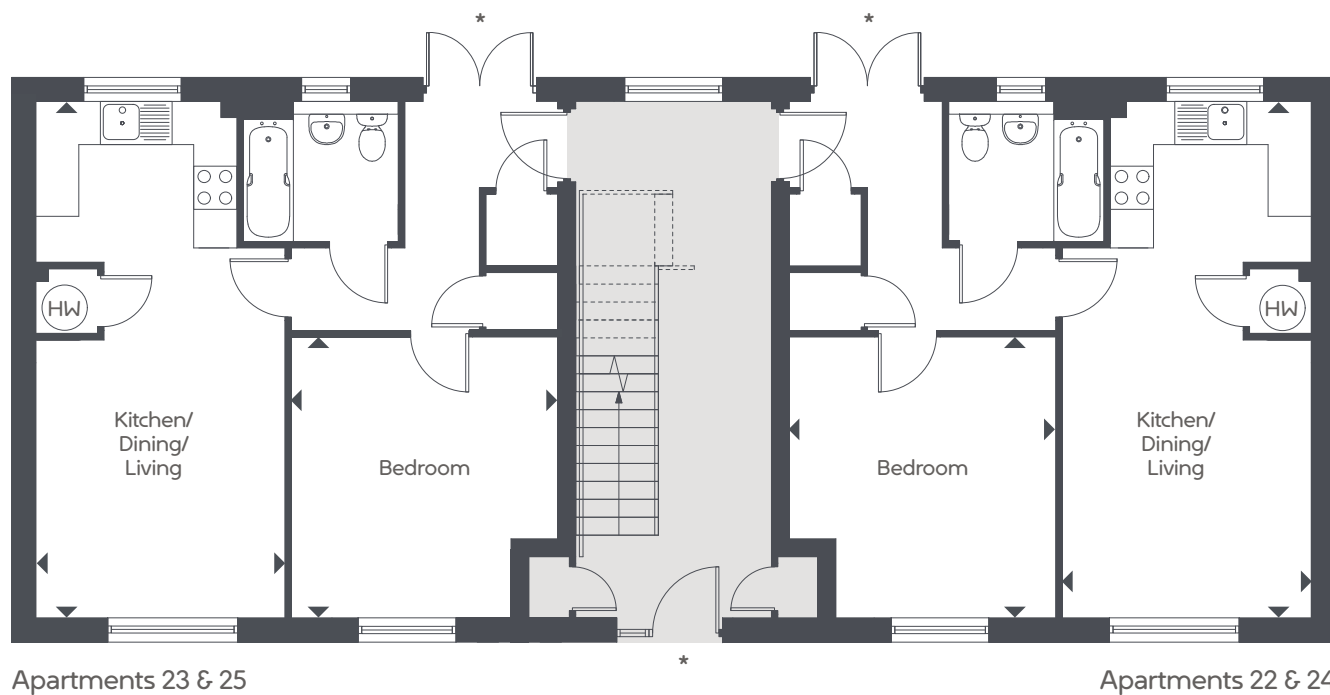


BROADBURY ROAD, BRISTOL

ONE BEDROOM APARTMENTS



Plots 22 - 25



23 25	gf	lf			
Kitchen/Dining/Living	7.19 x 3.47m	23' 6" x 11' 4"			
Bedroom	3.91 x 3.71m	12' 8" x 12' 2"			

22 24	gf	lf			
Kitchen/Dining/Living	7.19 x 3.47m	23' 6" x 11' 4"			
Bedroom	3.91 x 3.71m	12' 8" x 12' 2"			

HW – Hot Water Cylinder gf – Ground floor lf – First floor

*Doors to ground floor only. Replaced with windows on first floor. Maximum dimensions shown. Please speak to our sales executive for details. The floor plans depict a typical layout for this apartment type. For exact specification details of external and internal finishes, dimensions and floor plan differences please consult your sales executive. All dimensions are + or – 50mm and floor plans are not shown to scale. March 2025.