

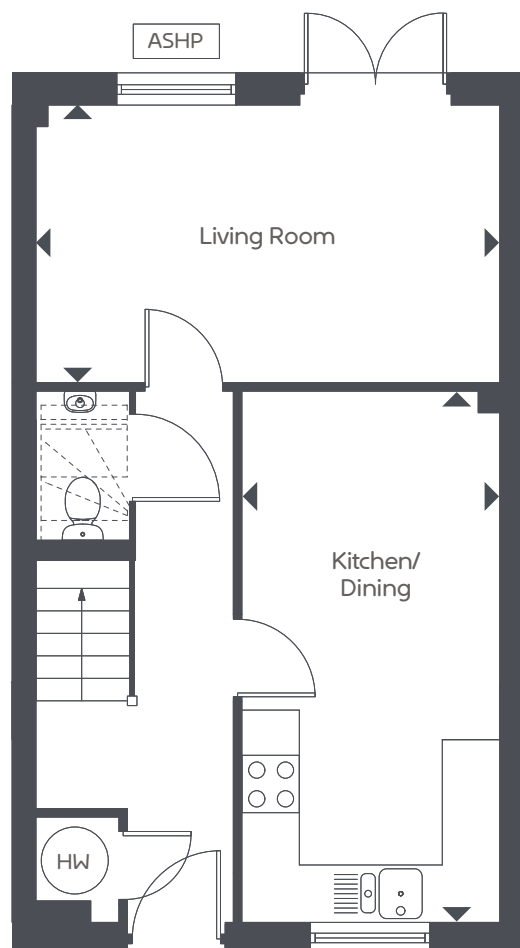
BROADBURY ROAD, BRISTOL

THE MILSOM, 2 BEDROOM HOUSE

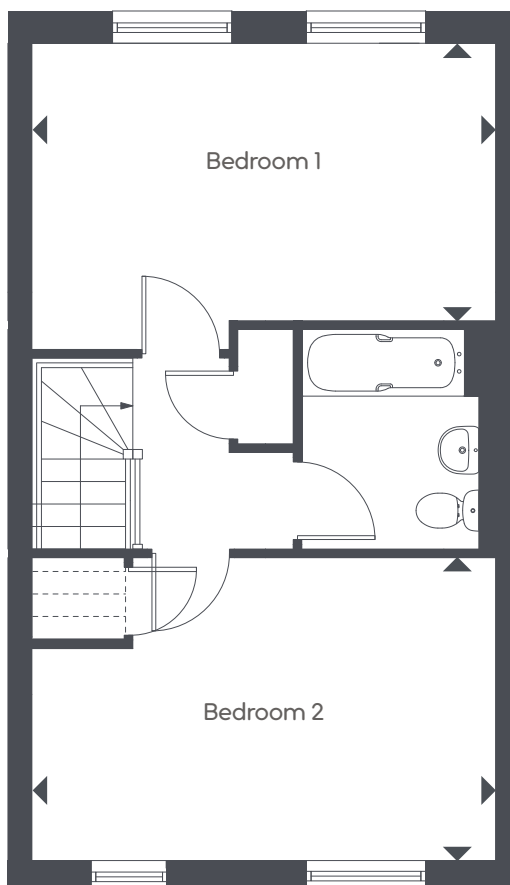
Plots 17, 18, 19, 27, 28, 31, 37, 40, 41



G



1st



Living Room	4.85 x 2.90m	15' 9" x 9' 0"
Kitchen/Dining	5.55 x 2.69m	18' 0" x 8' 0"
Bedroom 1	4.85 x 2.90m	15' 9" x 9' 5"
Bedroom 2	4.85 x 3.17m	15' 9" x 10' 4"

ASHP – Air Source Heat Pump HW – Hot Water Cylinder

Maximum dimensions shown. Please speak to our sales executive for details. The floor plans depict a typical layout for this house type. For exact specification details of external and internal finishes, dimensions and floor plan differences please consult your sales executive. All dimensions are + or – 50mm and floor plans are not shown to scale. March 2025.