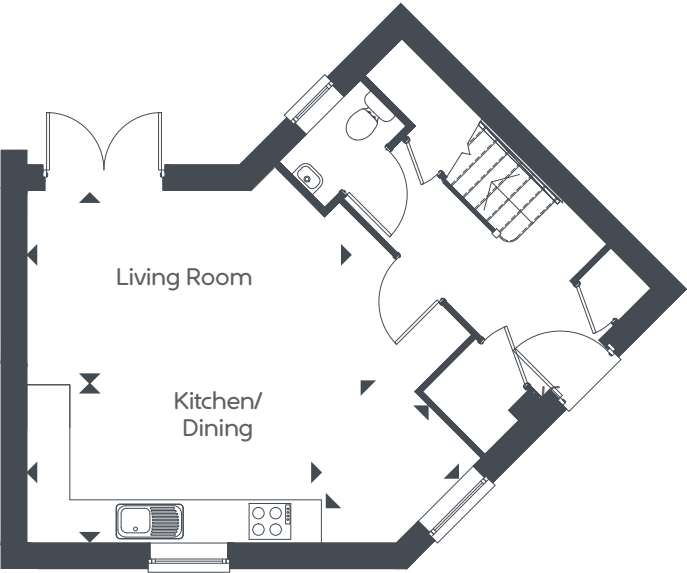


IMPERIAL PARK, BRISTOL

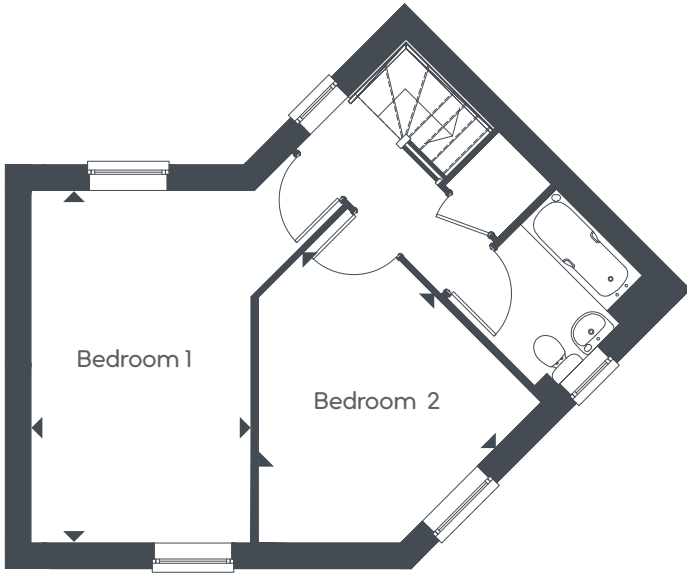
2 BEDROOM HOUSE, THE MILSOM – CORNER



G



1st



Living Room	4.50 x 2.70m	14' 9" x 8' 10"
Kitchen	4.10 x 2.20m	13' 5" x 7' 3"
Dining Room	2.00 x 1.95m	6' 7" x 6' 5"
Bedroom 1	4.90 x 3.06m	16' 1" x 10' 1"
Bedroom 2	3.82 x 3.20m	12' 6" x 10' 6"