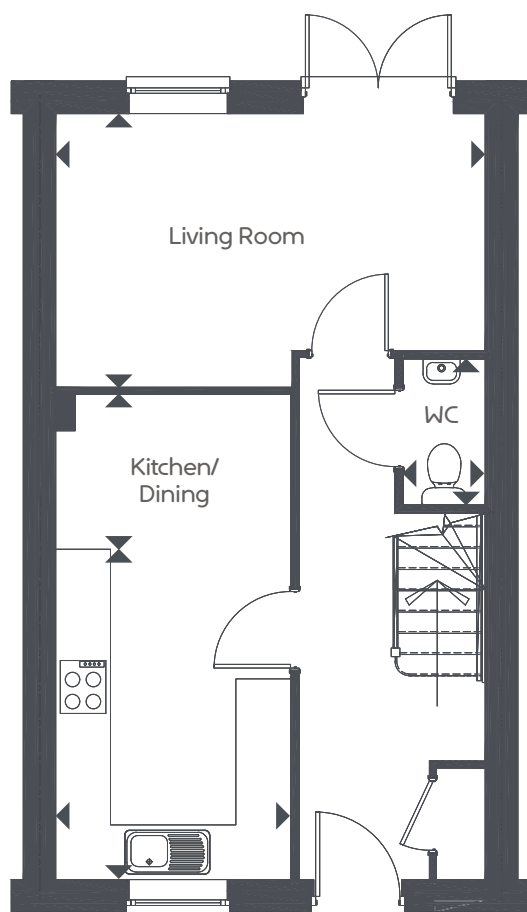


# IMPERIAL PARK, BRISTOL

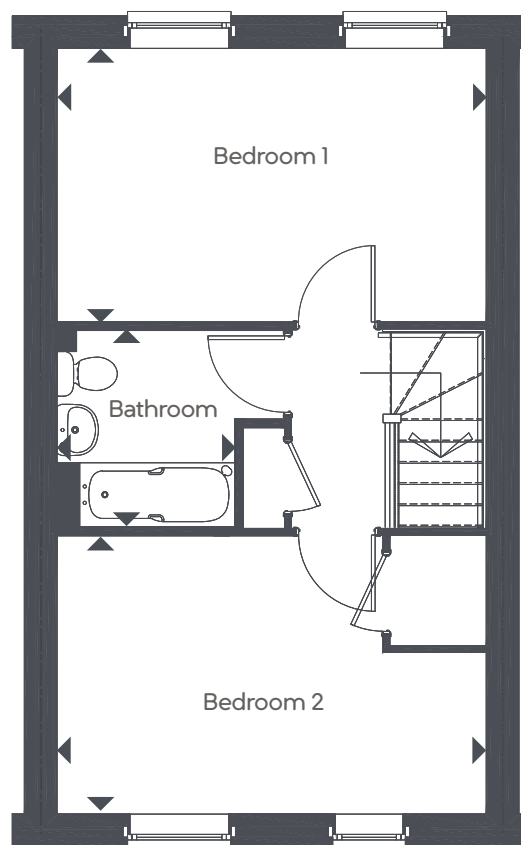
## 2 BEDROOM HOUSE, THE MILSOM



G



1<sup>st</sup>



Living Room	4.70 x 3.00m	15' 5" x 9' 10"
Kitchen/Dining	5.30 x 2.50m	17' 5" x 8' 5"
WC	1.66 x 0.96m	5' 44" x 3' 14"
Bedroom 1	4.70 x 3.00m	15' 5" x 9' 10"
Bathroom	2.53 x 2.21m	8' 30" x 7' 25"
Bedroom 2	4.70 x 3.00m	15' 5" x 10' 0"