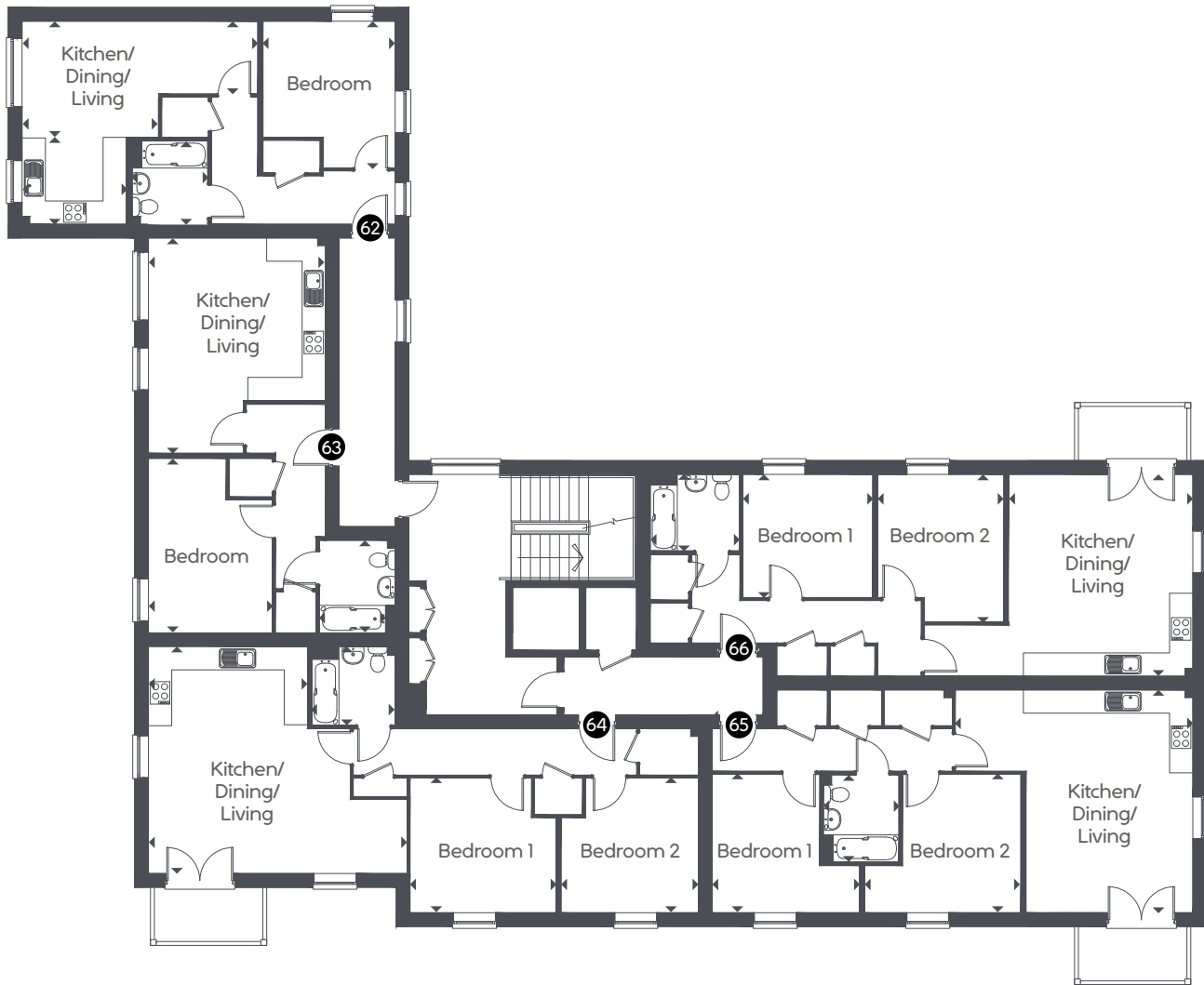


IMPERIAL PARK, BRISTOL

ONE AND TWO BEDROOM APARTMENTS



Block 2, Second floor (plots 62-66)



62

Kitchen/Dining/Living	6.00 x 5.20m	19' 11" x 17' 2"
Bedroom	3.70 x 3.40m	12' 5" x 11' 2"
Bathroom	2.20 x 2.03m	7' 21" x 6' 66"

63

Kitchen/Dining/Living	5.50 x 4.50m	18' 2" x 14' 11"
Bedroom	4.50 x 3.20m	14' 9" x 10' 6"
Bathroom	2.32 x 2.00m	7' 61" x 6' 56"

64

Kitchen/Dining/Living	6.60 x 5.80m	21' 10" x 19' 2"
Bedroom 1	3.70 x 3.40m	12' 4" x 11' 4"
Bedroom 2	3.50 x 3.40m	11' 7" x 11' 4"
Bathroom	2.20 x 2.08m	6' 82" x 6' 66"

65

Kitchen/Dining/Living	5.20 x 4.70m	17' 0" x 15' 6"
Bedroom 1	3.80 x 3.20m	12' 6" x 10' 7"
Bedroom 2	3.30 x 3.10m	10' 11" x 10' 5"
Bathroom	2.31 x 2.01m	7' 57" x 6' 59"

66

Kitchen/Dining/Living	6.10 x 5.70m	20' 1" x 18' 10"
Bedroom 1	3.80 x 3.50m	12' 5" x 11' 8"
Bedroom 2	4.00 x 3.50m	13' 2" x 11' 8"
Bathroom	2.36 x 2.03m	7' 74" x 6' 66"