

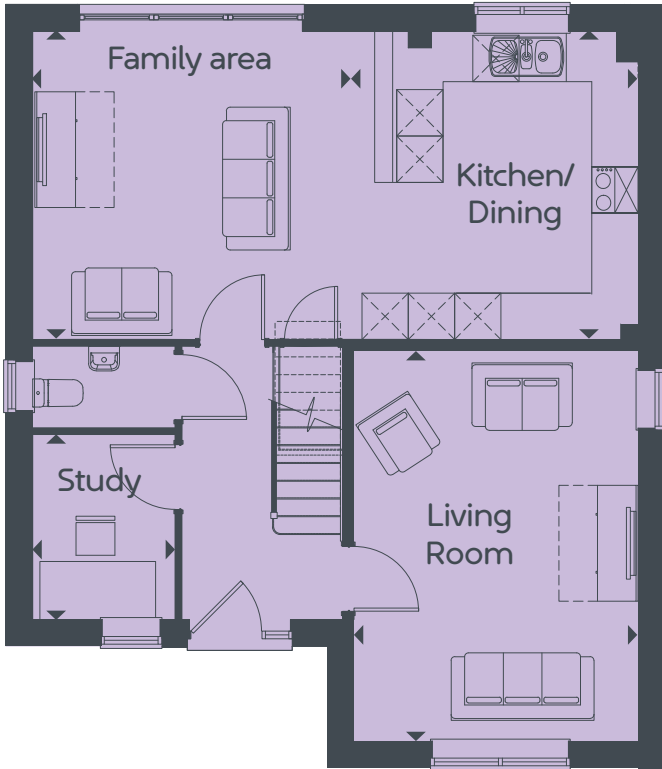
Keyford Meadows

4 Bedrooms



www.curo-sales.co.uk

G



1st



The Clifton

4 Bedrooms | Total area: 130 M² 1409 FT²

Ground Floor

Living Room 5.10 x 3.73m 16' 9" x 12' 3"
 Kitchen/Dining 4.35 x 4.04m 14' 3" x 13' 3"
 Family Area 4.03 x 3.54m 13' 3" x 11' 7"
 Study 2.43 x 1.88m 8' 0" x 6' 2"

1st Floor

Bedroom 1 3.73 x 3.65m 12' 3" x 12' 0"
 Bedroom 2 4.01 x 2.69m 13' 2" x 8' 10"
 Bedroom 3 3.56 x 3.01m 11' 8" x 9' 10"
 Bedroom 4 4.01 x 2.69m 13' 2" x 8' 10"



Maximum dimensions and some plots are handed compared to floor plans shown. Please speak to our sales executive for details. The floor plans depict a typical layout for this house type and room layouts are indicative only. For exact specification details of external and internal finishes, dimensions and floor plan differences please consult your sales executive. All dimensions are + or - 50mm and floor plans are not shown to scale. This image is from an imaginary viewpoint within an open space area. The purpose is to give a feel for the development and not an accurate description of each property. External materials, finishes and landscaping and the positions of garages may vary throughout the development. April 2023.