



The Willows

The Portway

3 Bedrooms

Total area: 93 M² 1001 FT²*

Plots: 32 – 37, 40 – 42



www.curo-sales.co.uk

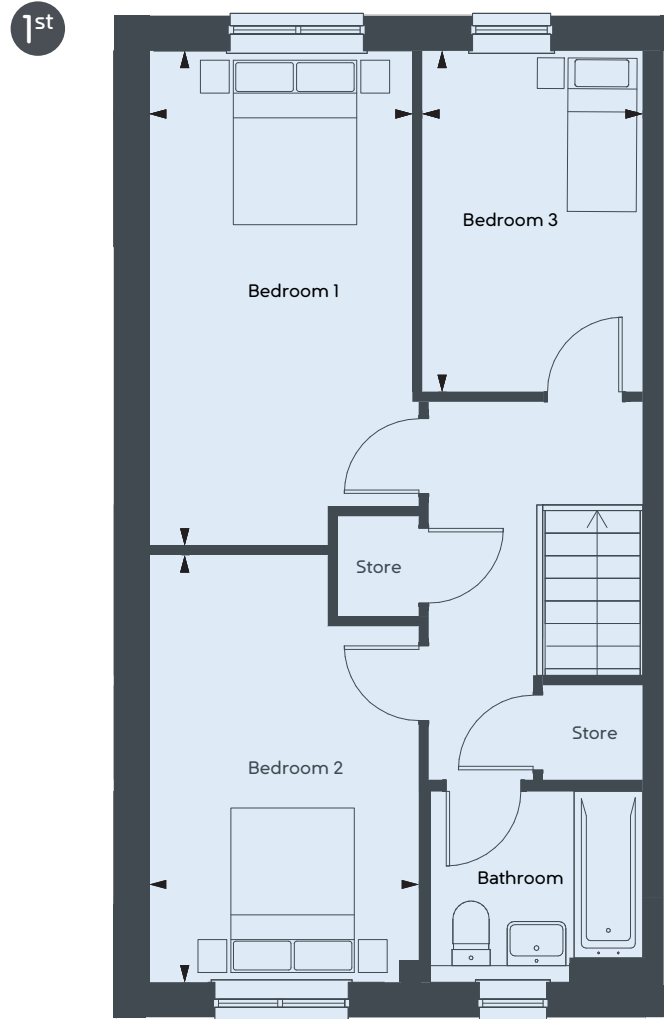
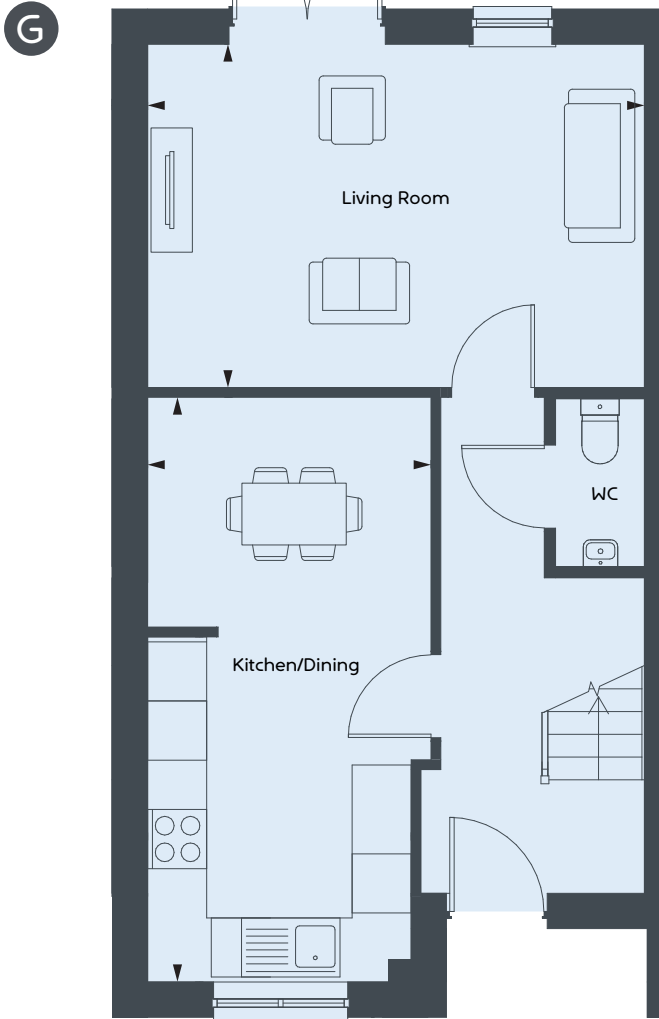
This image is from an imaginary viewpoint within an open space area. The purpose is to give a feel for the development and not an accurate description of each property. External materials, finishes and landscaping and the positions of garages may vary throughout the development.

The Willows

3
Bedrooms



www.curo-sales.co.uk



G Floor

Living Room
5.04 x 3.48m 16' 6" x 11' 5"

Kitchen/Dining
5.93 x 2.87m 19' 5" x 9' 5"

1st Floor

Bedroom 1
5.05 x 2.69m 16' 7" x 8' 10"

Bedroom 2
4.36 x 2.75m 14' 4" x 9' 0"

Bedroom 3
3.48 x 2.25m 11' 5" x 7' 5"

The Portway 3 Bedrooms

Total area: 93 M² 1001 FT²*
Plots: 32 – 37, 40 – 42

*Exact dimensions differ between plots.

Maximum dimensions and some plots are handed compared to floor plans shown. Please speak to our sales executive for details. The floor plans depict a typical layout for this house type. For exact specification details of external and internal finishes, dimensions and floor plan differences please consult your sales executive. Floor plans are not shown to scale. Customers should note this illustration is an example of The Portway house type. All dimensions indicated are approximate and the furniture layout is for illustrative purposes only. Homes may be 'handed' (mirror image) versions of the illustrations, and may be detached, semi-detached or terraced. Materials used may differ from plot to plot including render and roof tile colours. Detailed plans and specifications are available for inspection for each plot at our Sales Centre during working hours and customers must check their individual specifications prior to making reservation. October 2023.