

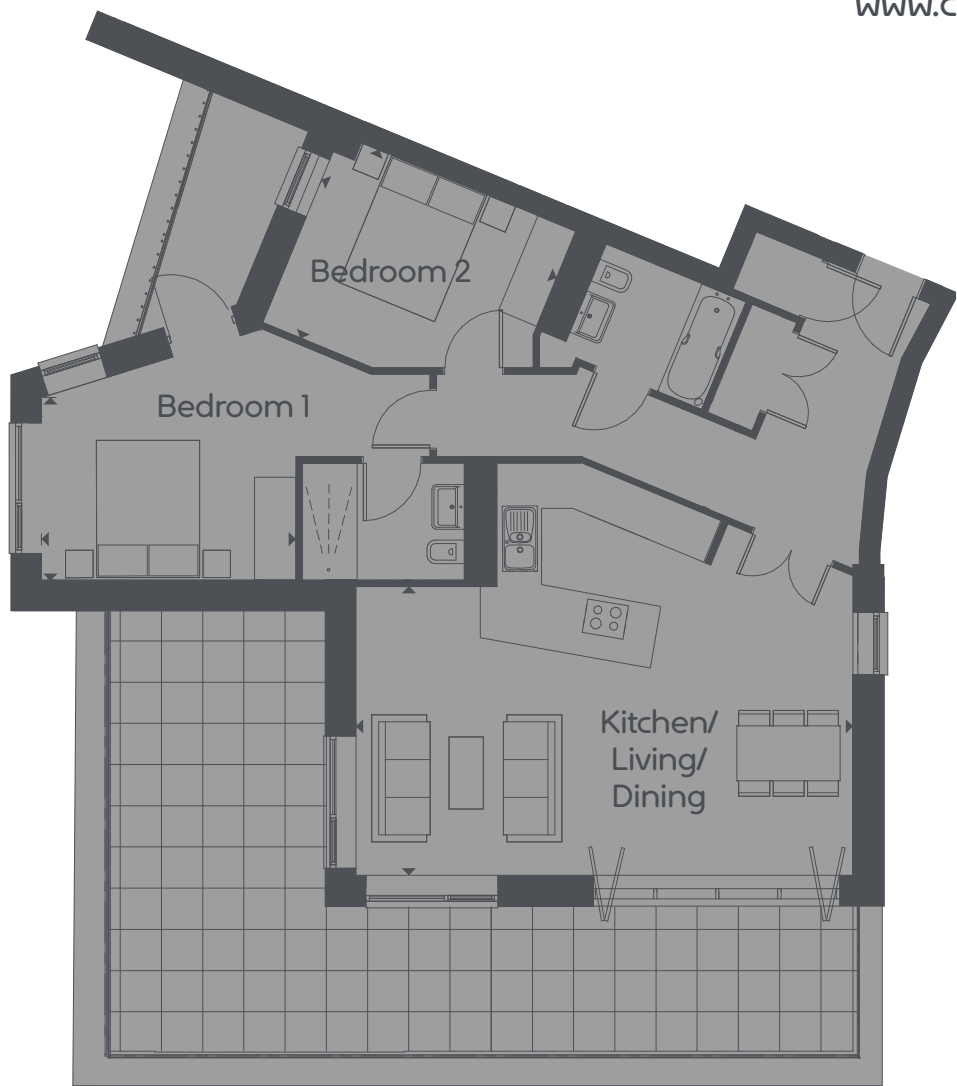
# Charlotte House – Penthouse Type C5

2 Bedrooms | Plot 340

Total area: 88 m<sup>2</sup> 947 ft<sup>2</sup>



[www.curo-sales.co.uk](http://www.curo-sales.co.uk)



## Kitchen/Living/Dining

7.24 x 4.21m

23' 9" x 3' 10"

## Bedroom 1

3.70 x 2.65m

12' 2" x 8' 9"

## Bedroom 2

3.71 x 2.97m

12' 2" x 9' 9"

Maximum dimensions shown, some plots do vary and where walls are splayed dimensions are approximate, please speak to our sales executive for details. The floor plans depict a typical layout for this apartment type and room layouts are indicative only. For exact specification details of external and internal finishes, dimensions and floor plan differences please consult your sales executive. All dimensions are + or - 50mm and floor plans are not shown to scale. March 2024.