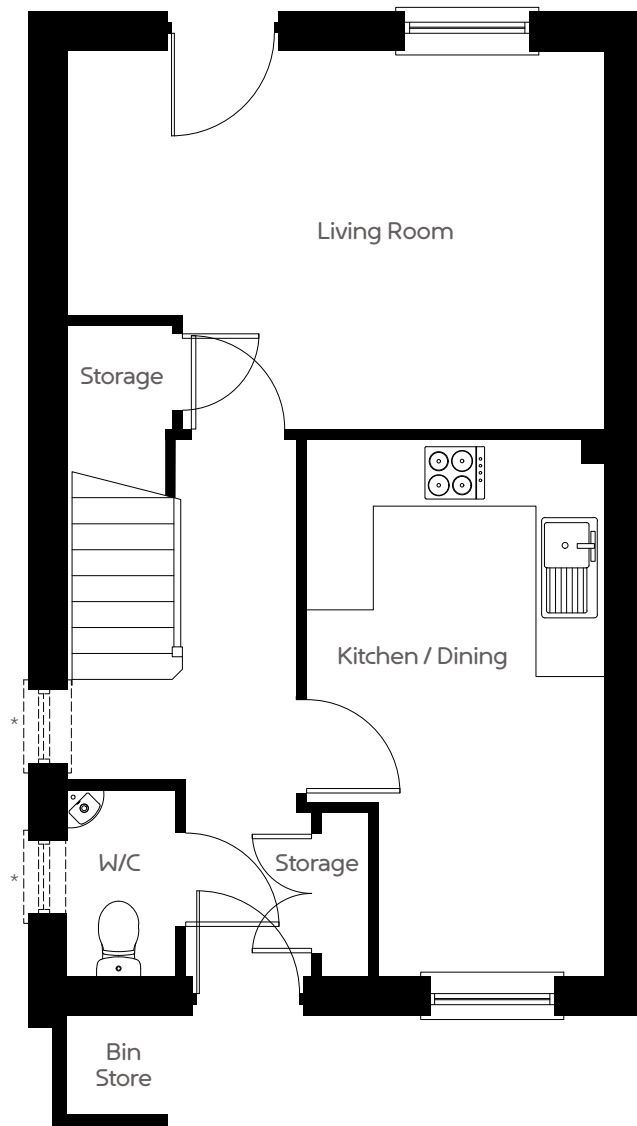


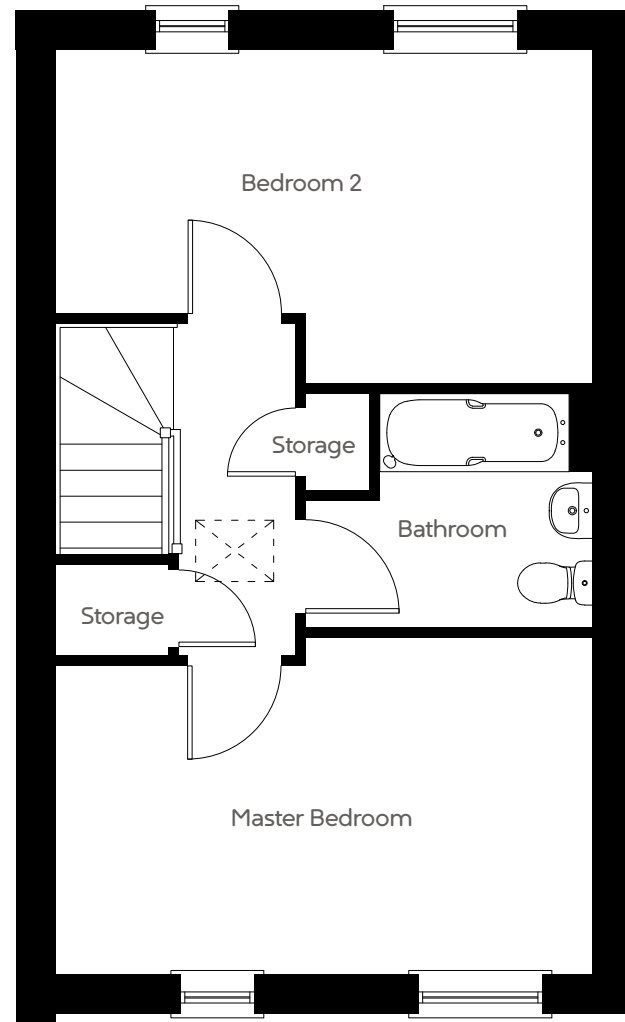
# URBAN QUARTER, HENGROVE

## 2 BEDROOM HOUSE, TYPE A



### GROUND FLOOR

Kitchen / Dining	4848 x 2700mm	15'10" x 8'10"
Living Room	4848 x 3425mm	15'10" x 11'2"



### FIRST FLOOR

Master Bedroom	4848 x 2800mm	15'10" x 9'2"
Bedroom 2	4848 x 3030mm	15'10" x 9'11"

\* Windows depend on plot number. Maximum dimensions and some plots are handed compared to floor plans shown. Please speak to our sales executive for details. The floor plans depict a typical layout for this house type. For exact specification details of external and internal finishes, dimensions and floor plan differences please consult your sales executive. Floor plans are not shown to scale. January 2020.